



December 2020, Sonora, California, Volume 1, Number 1

Happy Holidays from Mountain Home Gifts

We are heartily celebrating these holidays and the New Year as the process of distributing the new and improved old fashioned print version of the Mountain Home Gazette (Winter) will continue.

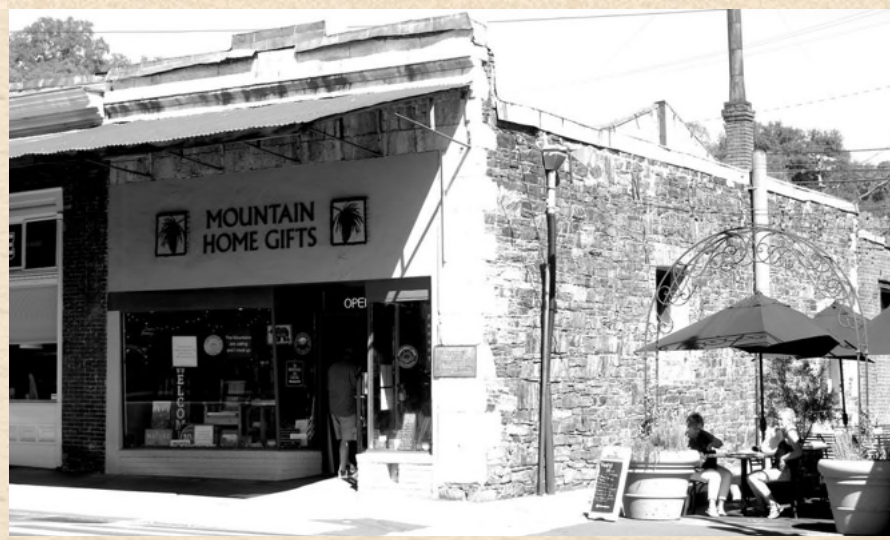


We plan to add pages to our seasonal quarterly as we include new items of interest to the publication, which can be also received online, and as we readers along the historic mountain communities and townships along the Hwy 108 corridor from Sonora to the Sonora Pass.

Our New Years wishes include those of you who have "subscribed" and those of you who will join us in 2021 along the storied trails of our mountain home communities.

We would be especially thankful for your patronage this coming year. We want to thank those of you who have supported Mountain Home Gifts over the past ten years and your continued endorsement of local businesses will be greatly appreciated.

Sign up for the Mountain Home Gazette, email us at: MountainHomeGazette@gmail.com



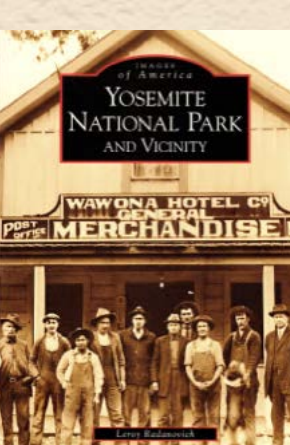
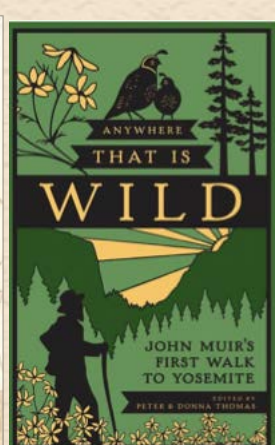
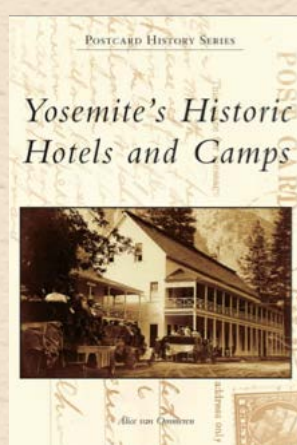
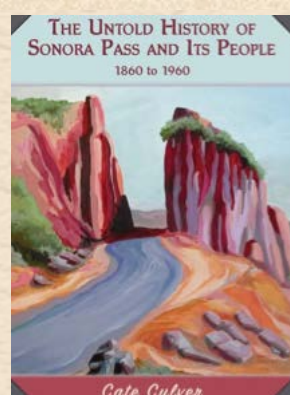
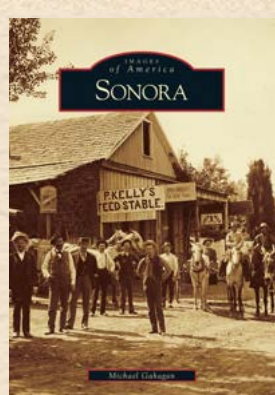
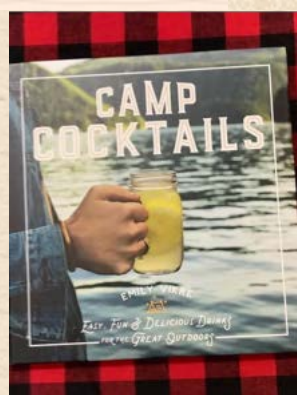
Historic Corner in Sonora for 100 Years

When you visit Mountain Home Gifts you are in the heart of historic downtown Sonora, first settled in Gold Rush days in the 1850s. Mountain Home Gifts, located in a building built in the late 1800s, (above) anchors a commercial corner on the north-east corner of South Washington and Linoberg Lane (umbrellas) running east through to South Stewart Street. (read more)



Love of the Mountains

Mountain Home Gifts has become a unique and special store with a collection of gift items and artwork, much of it designed by us and created by artists that celebrate all the aspects of spending time in the mountains. Visit the store in downtown Sonora or the store's online website and shopping cart. You can see and feel this love of the mountains. mountainhomeshop.com



Did You Know...?

Mountain Home Gifts carries a wide variety of book titles representing mountain cabin community authenticity and distinct relevance, pictorial reflections of Highway 108's matchless seasonal beauty. Additional publications include hiking guides of the sierras, Yosemite and Sonora history and cabin and outdoor cooking. Still more follow the storied trails of the region's historic gold rush legacy. mountainhomeshop.com

Placemats and Much More

From placemats to tableware, mugs, glasses, caps, hoodies, wall signs, posters, kitchenware, Pinecrest Lake playing cards, Mountain Home Gifts provides a wide variety of gift and home and cabin decor items. We are also a local source for fleece clothing and mountain themed hoodies and t-shirts. Browse our online store for more choices and Christmas gift ideas. mountainhomeshop.com

Winter Sports Back in the Day

From skiing, back country and cross country, snowshoeing and skating, sledding and snow play, the villages along the Highway 108 corridor have been winter playgrounds for nearly 100 years.

From the snowline around Twain Harte, winter sports truly begin at the Long Barn Lodge Skating Arena featuring an indoor skating rink.

Little Sweden, Tuolumne County's first ski resort, has long been a popular sliding hill. Even when the buildings had long been boarded up winter visitors flocked to the easily accessible hill to play in the snow. Finally, in February 2012, the buildings were demolished.

Dodge Ridge, just off of Pinecrest, is celebrating its 70th year as a major skiing and rider (snowboarding) resort, from a base elevation of 6,600 ft to a summit of 8,200 ft. offering over 850 acres of skiable area, 67 trails and 12 chairlifts.

The Leland High Sierra Snowplay, located 7 miles east of Strawberry has been providing family fun in the snow for three decades. Billed as the largest snowplay park in the Sierras, it has become a popular tubing area.

The Stanislaus National Forest, founded in 1897, operates a Highway 108 Sno-Park, located at the the winter closure gate east of Strawberry.

(click here for Mountain Home Gifts cabin art)



"I must return to the mountains — to Yosemite. I am told that the winter storms there will not be easily borne but I am bewitched, enchanted, and tomorrow I must start for the great temple to listen to the winter songs preached and sung only there."

— John Muir

Mountain Home Gifts, 87 South Washington Street, Sonora, California 95370

Telephone: 209.533.5319 Email: info@mountainhomeshop.com

Online Store and Blog: mountainhomeshop.com/ Facebook: www.facebook.com/MountainHomeGifts

Unsubscribe to our exclusive and distinctive newsletters